



Shown with optional pole mount stand

Speciality Cameras

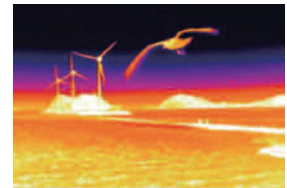
Dual Head Thermal/Visible 360° Endless P/T Camera

ZT-PTD Series

Designed for situations where both a thermal and an analog camera are required, this extreme performance unit is ideal for mission critical situations including perimeter surveillance, search & rescue, port and marine security, border patrol, electrical inspection and energy conservation.

Features:

- Dual Cameras - Thermal and Visible
- Certified for 1,000 Hours of Salt Water Spray Testing
- 3G Vibration Performance
- 0°-360° endless pan & 0°-360° tilt motion for recording at any angle
- 165 Preset Positions
- Multiple Lens and Mounting Options Available
- IP68 Rated for Extreme Weather Conditions



Thermal Imaging Camera



20x HD / 36x D1 Camera

Scan Me!



ZT-PTD

Dual Head Thermal/Visible 360° Endless P/T Camera

■ Mounting Options



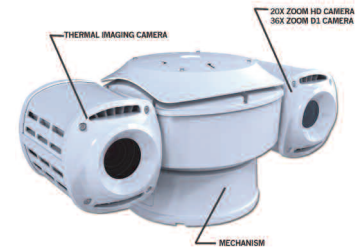
Ceiling Mount



Wall Mount



Pole Mount Stand



■ Specifications

Model		ZT-PTD	ZT-PTDHD
Thermal Module	Sensor	Uncooled Microbolometer	
	Type	25µm	
	Cell Size	384 x 288	
	Resolution	D1 Class with Original Scaling Technology	
	Measuring Wavelength	8 ~ 14µm	
	NETD	40mK / F1.0	
	Video Output	NTSC / PAL (Switchable)	
	Output Frequency	59.94Hz (30FPS)	
	Lens Options	20mm F1.0 (35/60mm optional)	
	Range of Observation Display	-4° F ~ 248° F (Normal Mode) -4° F ~ 1202° F (High Temp Mode)	
Digital Zoom	4x (15 Steps)		
Camera Module	Image Sensor	1/4" Sony EXview HAD CCD	1/2.8" Sony EXmor CMOS Sensor
	Resolution	550 TVL	1080P
	Total Image Pixels	811 H x 508 V, 410K	1920 X 1080P
	Lens	x36 - F1.6, 4.5~122.4mm (Digital x12 / Total x432)	x20 - F1.6, 3.5~94mm
	Minimum Illumination	0.1 Lux (Color) / 0.01 Lux (B/W, IR on), 50 IRE / F1.6	0.095 Lux (HSM On / DSS Off), 0.3 Lux (HSM Off / DSS Off), 0.005 Lux (HSM On / DSS Off)
	Video Signal-to-Noise	> 50dB	
Function	Calibration	Auto / Manual / Interval (up to 3,600 sec) Mode Selectable	
	Image Flip	Vertical (Flip), Horizontal (Mirror) ON/OFF	
	Inverse Mode	ON/OFF	
	AGC	ON/OFF One-push (5 step)	
	Output Mode	NTSC/PAL Mode Selectable	
	Image Mode	B/W and Three Color Mode	
	Temperature Range Process	MIN/MAX Temperature Range Selectable	
	OSD	OSD menu available	
	Preset Positions	165	
	Preset Tours	8 Programmable Group Tours (1 group/60 steps)	
	Pattern/Scan	8 Programmable Patterns / 8 Programmable Scans	
	Camera ID	1-255 address	
	Controller Interface	RS-485 (Pelco D/P) 2400/4800/9600bps Ethernet	
	Alarm	4 Alarms	
Aux out	2 Aux Out		
Pan/Tilt	Pan Angle	0° ~ 360° (Endless)	
	Tilt Angle	0° ~ 360° (Endless)	
	Pan/Tilt Manual Speed	1 ~ 100° /sec	
	Pan/Tilt Preset Speed	10 ~ 200° /sec	
Physical	Defrost Device	Optional	
	Vibration Testing	Passed 3G Vibration Testing	
	Housing	Diecast aluminum exterior O-ring sealed, anti-corrosive coating on all internal parts. Certified for 1,000 hours of salt water spray testing.	
	Ext-Interface	RS-232 (9600~38400 bps/N/8/1), KEYPAD (5 Key)	
	Power Source	12VDC / 24VAC	
	Power Consumption	12VDC 4.0A (Max:48W) / 24VDC 1.8A (Max:43.2W) /24VAC 2A (Max:48W)	
	Temperature	-22°F~131°F (-30°C ~ 55°C)	
	Dimensions	TBD	
	Weight	TBD	
	IP Rating	IP68 (Defrost Version IP66)	

All specifications are subject to change without notice.